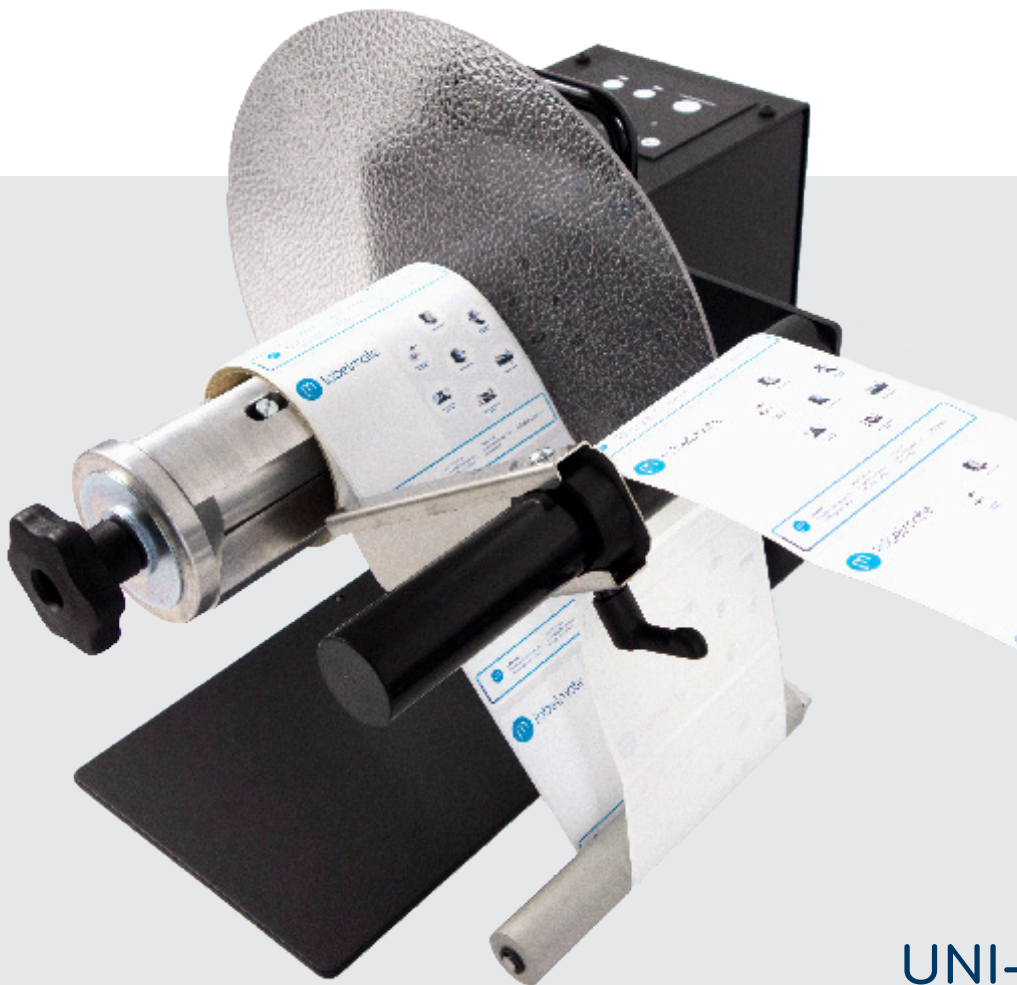




# labelmate

THE WORLD'S LEADING MANUFACTURER OF LABEL DISPENSERS, REWINDERS, UNWINDERS & COUNTING SOLUTIONS



UNI-CAT

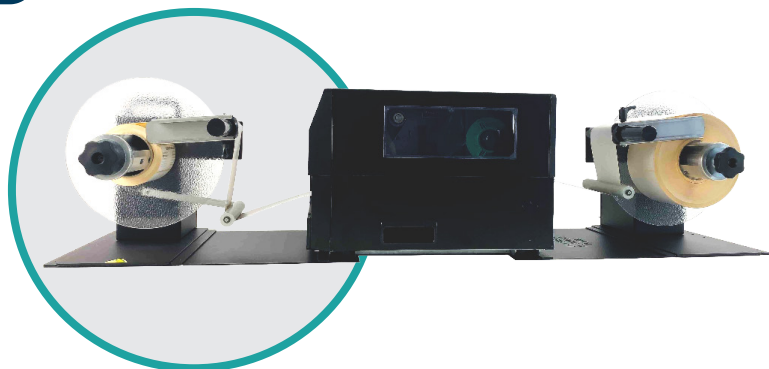
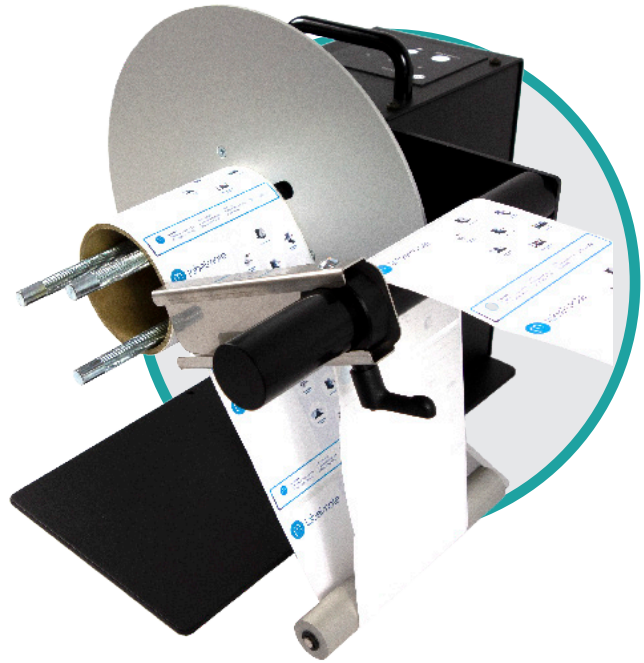
[labelmate.com](http://labelmate.com)

# Uni-Cat

## UNIVERSAL & INTELLIGENT UNI-CAT

The new UNI-CAT is the smartest and most "UNI-VERSATILE" rewinder/unwinder in the Labelmate product range ! With various core sizes, label widths, roll diameters and options to choose from, there is a rewinder/unwinder to fit any job you may have. The new UNI-CAT replaces all CAT-3-TA models (with Tension Arm) and CAT-4 models.

- ✓ Self-teaching to work as rewinder or unwinder
- ✓ Supports back-feed process for colour inkjet & tension sensitive printers
- ✓ Auto-Speed Adjustment to align with printer speed
- ✓ Speed up to 125cm/sec to work with the fastest bar-code printers available
- ✓ Bi-Directional for internal & external winding
- ✓ New maintenance free, soft-touch control panel with LED-Status-Indicators



## FEATURES

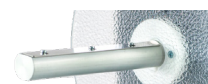
- Seamlessly detecting & following printer activity: rewinding, idle and unwinding
- UNI-CAT-3-Standard has a Vane-style core Holder
- UNI-CAT-3-ACH employs an adjustable core holder enabling the use of varying core sizes, for maximum flexibility
- UNI-CAT-3-CHUCK includes a quick-locking "Quick-Chuck" permitting the fastest loading and unloading of cores and label rolls
- CHUCK/STANDARD/10-INCHES models come standard for using cores in 76mm. On request available in 38/40/44/70 mm. See product catalogue for configuration
- ALL models come with paper guide for straight and tight label rolls, no flanges needed

## UNI-CAT-MODELS

P/N	MODEL	DESCRIPTION	MAX LABEL WIDTH	MAX ROLL DIAM	MAX WEIGHT
LMR042	UNI-CAT-STANDARD	Standard for 76mm cores (38/40/44/50/70/100mm available)	155 mm	300 mm	8 KG
LMR043	UNI-CAT-ACH	Adjustable Core Holder for using any core diameter between 25 & 101 mm.	155 mm	280 mm	7 KG
LMR045	UNI-CAT-10-INCHES	Standard for 76mm cores (38/40/44/50/70mm available)	255 mm	300 mm	10 KG
LMR046	UNI-CAT-1-INCH	For 25,4mm cores	155 mm	220 mm	8 KG
LMR044	UNI-CAT-CHUCK	Easy-Loading Quick- Chuck for 76mm cores (38/40/44/70mm available)	<b>170 mm</b>	300 mm	10 KG
LMR044/LMX484	UNI-CAT-CHUCK	Easy-Loading Quick- Chuck for 76mm cores	<b>220 mm</b>	300 mm	10 KG
LMR044/LMX485	UNI-CAT-CHUCK	Easy-Loading Quick- Chuck for 76mm cores	<b>270 mm</b>	300 mm	10 KG
LMR047	UNI-CAT-R16	Easy-Loading Quick-Chuck for 76mm cores and 400 mm rolls	170 mm	400 mm	<b>10 KG</b>
LMR049	UNI-CAT-XL*	Easy-Loading Quick-Chuck for 76mm cores and 400 mm rolls	<b>170 mm</b>	400 mm	<b>14 KG</b>
LMR049/LMX484	UNI-CAT-XL*	Easy-Loading Quick-Chuck for 76mm cores and 400 mm rolls	<b>220 mm</b>	400 mm	14KG
LMR049/LMX485	UNI-CAT-XL*	Easy-Loading Quick-Chuck for 76mm cores and 400 mm rolls	<b>270 mm</b>	400 mm	14 KG



10-INCHES



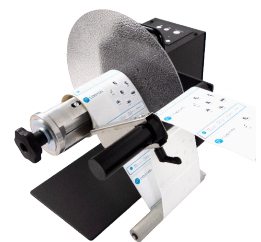
1-INCH



UNI-CAT-STANDARD



UNI-CAT-ACH



UNI-CAT-CHUCK

## UNI-CAT-OPTIONS

P/N	DESCRIPTION
LMX579	UNIVERSAL- ALIGNMENT PLATE for any desktop Thermal Transfer and Inkjet color printer
LMX580	ALIGNMENT PLATE for EPSON C7500
LMX566	ALIGNMENT PLATE for ASTRO-QL-300 and OKI PRO1040
LMX577	ALIGNMENT PLATE for ASTRO QL-120
LMX492	10-Inches shaft with vanes, internal and external flanges.
LMX500	Adjustable Core Holder for any core size from 25 to 101mm
LMX501	For rewind on shaft. No core is needed.
LMX502	For rewind on 10-inches shaft. No core is needed
LMX546	1 Inch shaft with vanes, internal and external flanges
LMX491	Standard shaft with vanes, internal and external flanges

### DIMENSIONS

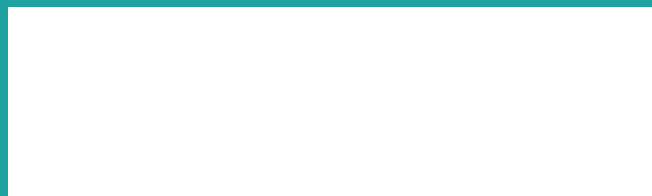
- UNI-CAT-STANDARD: W x D x H:300 x 350 x 320 mm
- UNI-CAT-CHUCK: W x D x H:300 x 385 x 320 mm
- UNI-CAT-ACH: W x D x H:280 x 310 x 310 mm
- UNI-CAT-10-INCHES: W x D x H:300 x 455 x 320 mm
- UNI-CAT-1-INCH: W x D x H:220 x 350 x 280 mm
- Shipping Weight: Circa 14 KG, depending on configuration

### GENERAL

- Power Supply: 100-240V- 50Hz, Output 15VDC-4,33A
- Limited Warranty of 5 Years, 1 Year on the Power Supply



Your local partner:



**+32 2 375 69 60**

**brussels@labelmate.com**

Chaussée de Ruisbroek 290  
1620 Drogenbos (Belgium)

**www.labelmate.com**